

OIL QUICK COUPLINGS

RACCORD RAPIDE HUILE

SCHNELLKUPPLUNGEN FÜR HYDRAULIK

Temperature Range:
-20°C +100°C (-4°F +212°F)

Working Pressure:
HPS 08 0 - 450 bar (0 - 6525 PSI)
HPS 12 0 - 350 bar (0 - 5076 PSI)

Max. Connection Pressure:
Plug - 120 Bar (1740 PSI)
Coupler - 40 Bar (580 PSI)

Flow Capacity:
NW - 08 - 8 mm (5/16)
NW - 12 - 12 mm (1/2)

Standard Version:
Main Parts AISI 420 Chrome Steel
Seal - Fluorocarbon (FPM)
Locking Balls - 08-10 Units / 12-12 Units
Plug - AISI 420 (Hardened)

Température d'utilisation:
-20°C +100°C (-4°F +212°F)

Pression de Service:
HPS 08 0 - 450 bar (0 - 6525 PSI)
HPS 12 0 - 350 bar (0 - 5076 PSI)

Pression de connexion maximum:
Coupleur - 120 Bar (1740 PSI)
Embout - 40 Bar (580 PSI)

Passage:
NW - 08 - 8 mm (5/16)
NW - 12 - 12 mm (1/2)

Version Standard:
Pièces en acier chromé - AISI 420
Joint - Fluorocarbon (FPM)
Billes Blocage - 08-10 Units / 12-12 Units
Embout - AISI 420 (Durci)

Temperaturbereich:
-20°C +100°C (-4°F +212°F)

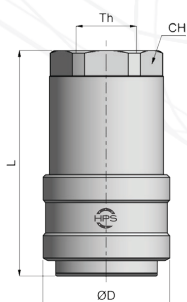
Betriebsdruck:
HPS 08 0 - 450 bar (0 - 6525 PSI)
HPS 12 0 - 350 bar (0 - 5076 PSI)

Restdruck:
Nippel - 120 Bar (1740 PSI)
Kupplung - 40 Bar (580 PSI)

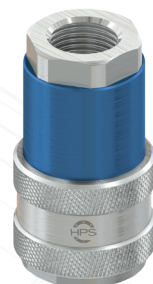
Nennweiten:
NW - 08 - 8 mm (5/16)
NW - 12 - 12 mm (1/2)

Standardversion:
Material vorwiegend - AISI 420 Chromstahl
Dichtung - Fluorkautschuk (FPM)
Kugeln - 08-10 Stück / 12-12 Stück
Nippel - AISI 420 gehärteter Chromstahl

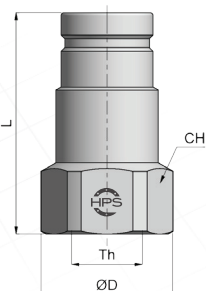
ANTI-POLLUTION / ANTIPOLLUTION / ANTI-POLLUTOR



Dimensions (mm)				Part-number
Th (BSP)	ØD	L	CH	SOCKET
1/2	40	72	30	SK08RF12
1/2	40	72	30	SK08RF12P - Under residual pressure.
1/2	40	72	30	SK08RF12V - VITON seals.
1/2	40	72	30	SK08RF12PAV - Under Red. Press. With VITON seals.
3/4	50	89	41	SK12RF34
3/4	50	89	41	SK12RF34P - Under residual pressure.
3/4	50	89	41	SK12RF34V - VITON seals.
3/4	50	89	41	SK12RF34PAV - Under Red. Press. With VITON seals.



ANTI-POLLUTION / ANTIPOLLUTION / ANTI-POLLUTOR



Dimensions (mm)				Part-number
Th (BSP)	ØD	L	CH	PLUG
1/2	32.5	63	30	G08RF12
1/2	32.5	63	30	G08RF12P - Under residual pressure.
1/2	32.5	63	30	G08RF12V - VITON seals.
1/2	32.5	63	30	G08RF12PAV - Under Red. Press. With VITON seals.
3/4	44.5	74	41	G12RF34
3/4	44.5	74	41	G12RF34P - Under residual pressure.
3/4	44.5	74	41	G12RF34V - VITON seals.
3/4	44.5	74	41	G12RF34PAV - Under Red. Press. With VITON seals.

