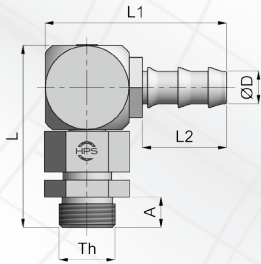


ORIENTABLE PLUGS

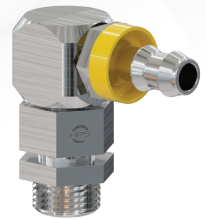
RACCORD ORIENTABLE

FREI ORIENTIERBARE VERSCHRAUBUNGEN

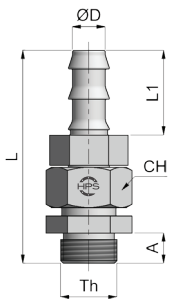
- 90° PLUG MALE THREAD, 360° ORIENTABLE FOR PUSH-LOCK HOSE
RACCORD FILETÉ 90° ROTATION 360° POUR TUYAU PUSH LOCK
WINKELSTECKER, DREHBAR FÜR SCHLAUCHTÜLLE



Ø D	Th (G)	L	L1	L2	A	Part-number	
1/4	7.7	1/4	51	47	23	9	C0814
3/8	9.7	1/4	51	49	25	9	C1014
3/8	9.7	3/8	51	49	25	9	C1038
3/8	9.7	1/2	51	49	25	9	C1012
1/2	12.7	1/4	51	52	28	9	C1214
1/2	12.7	3/8	51	52	28	9	C1238
1/2	12.7	1/2	51	52	28	9	C1212
5/8	15.9	3/8	53	66	37	9	C1638
5/8	15.9	1/2	53	66	37	9	C1612



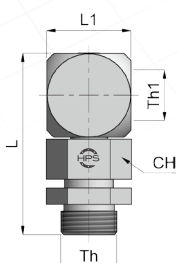
- ROTARY PLUG, MALE THREAD FOR PUSH-LOCK HOSE
RACCORD FILETÉ TOURNANT POUR TUYAU PUSH LOCK
STECKER GERADE, DREHBAR FÜR SCHLAUCHTÜLLE



Ø D	Th (G)	L	L1	A	CH	Part-number	
1/4	7.7	1/4	61	23	9	22	D0814
3/8	9.7	1/4	63	25	9	22	D1014
3/8	9.7	3/8	63	25	9	22	D1038
3/8	9.7	1/2	63	25	9	22	D1012
1/2	12.7	1/4	66	28	9	22	D1214
1/2	12.7	3/8	66	28	9	22	D1238
1/2	12.7	1/2	66	28	9	22	D1212
5/8	15.9	3/8	75	37	9	22	D1638
5/8	15.9	1/2	75	37	9	22	D1612



- MALE THREAD PLUG, 360° ORIENTABLE FOR HOSE ADAPTOR
ADAPTATEUR FILETÉ ROTATIF 360° POUR RACCORD
ADAPTOR FÜR SCHLAUCH, AUBENGEWINDE, DREHBAR



Th (G)	Th1 (G)	L	L1	CH	Part-number
1/4	3/8	53	25	22	S3814
3/8	3/8	53	25	22	S3838
1/2	3/8	53	25	22	S3812

